

## Autumn 1 Topic: Local Hero and a comparison of Wakefield and Scarborough

### Subjects I will cover in this topic:

History	Geography	Art	Design Technology	Music	RE	ICT
Reading	Writing	Maths	SEAL / PSHCE	Science	British Values	PE

### Things I will learn during this topic:

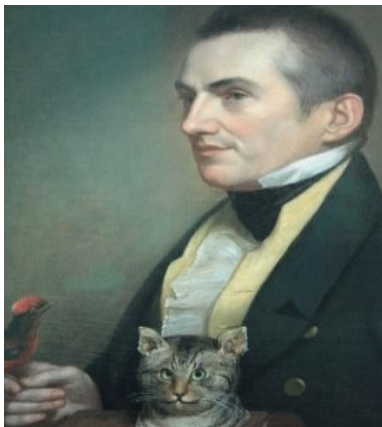
- I can explain the key characteristic features of Wakefield and Scarborough today.
- I can analyse both Wakefield and Scarborough to examine the similarities and differences of them.
- I can research and explain giving reasons why the coastal town of Scarborough became so popular.
- I can examine the effects of coastal erosion on Scarborough making reference to the Holbeck Hotel landslide in 1993.
- I can via a class trip to Scarborough look at coastline, explore coastal erosion and how this has changed the landscape; how further erosion will change the area in years to come; how people are working to stop the erosion
- I can develop map skills to locate places, describing where places are and describing features studied such as Scarborough and Wakefield.
- I can use maps to plot out a route by which we can travel from Wakefield to Scarborough making reference to key road links and distances.
- I can use observational drawing to illustrate the different tones and textures of stonework within my sketching.
- I can produce a newspaper report about the Holbeck Hotel landslide in 1993 making sure to include the key features such as the 5w's, witness quotes and appropriate images.
- I can use ICT to produce a report about Class 3's trip to Scarborough.
- I can produce a traditional seaside poem.
- I will learn about the life of Charles Waterton and what is important about his achievements.
- I will learn about portraiture by studying Charles Waterton portraits and produce our own portraits.

### Places I will visit, people that will help me learn and exciting things that will happen:

Class visit to Scarborough including a visit to the castle.  
Wakefield Museum Services workshop about Charles Waterton.

### I will learn about:

#### Charles Waterton



**Charles Waterton**  
- explorer and one of the first conservationists.



Scarborough - the coastal town



Holbeck hotel - Scarborough

## Waterton Park/ Wakefield



Waterton Park - home of Charles Waterton, which he turned into a nature reserve. Now a hotel and golf course.

### Key facts I need to know:

- What is meant by the term 'coastal town'?
- How have Scarborough and Wakefield changed over the last 50 years?
- Explain the similarities and differences between Scarborough and Wakefield.
- What do we mean by erosion and what impact can it have on residents and the environment.
- Who was Charles Waterton and what did he achieve?

### Topic specific vocabulary I will use and learn the meaning of during this topic:

- |                |                   |
|----------------|-------------------|
| • Coastal town | • Igneous         |
| • Erosion      | • Tourism         |
| • Landslides   | • Hero/Heroine    |
| • Sea defences | • conservationist |
| • sedimentary  | • campaigner      |

### What do I want to know? What questions do I have?

### Purpose/End Product?

An ICT based booklet on Scarborough.  
A newspaper report about the Holbeck Hotel.  
A local area display.  
A report about Charles Waterton and a portrait of him.  
A class book of seaside poems.